



THE PREMIER ENTEGRA DIESEL COACH OWNERS ASSOCIATION

Rollin' Along

APRIL 2019

Featuring:

- Upcoming Events
- Technical Hints and Information
- Member Stories
- Recipes for the Coach Life
- Regional Activity
- And more

Content

Presidents Corner.....	1
From the Editors Desk	2
Rally Ho' – Upcoming Events.....	3
Technical Hints and Information	3
Member Stories.....	15
Recipes for the Coach Life.....	17
Regional Activities.....	18
Destinations.....	18
What's New in Coaches	18
Entegra Service Highlights	20
Secretary.....	20
Treasurer.....	22
Membership.....	22
FMCA International Area	23
Links of Interest.....	24

Contact Information for Your ECOA Officers

- President – Wm. Patrick (Pat) Bauer
E-Mail: wmpbauer@verizon.net
- Secretary – Medarda Bauer
E-Mail: wmpbauer@verizon.net
- Treasurer – Mario LaCute
E-Mail: mlacute1@yahoo.com
- National Director – Terry Walker
E-Mail: twwalk@aol.com
- Alt National Director – Wayne Baumann
E-Mail: wbauma@aol.com
- Vice President – Tom Crowley
E-Mail: crowleytj@gmail.com
- Vice President – Gary Jones
E-Mail: gary.jones@LSUS.edu
- Vice President – Linda Hanson
E-Mail: leelou07@icloud.com
- Vice President – Tommy Townsend
E-Mail: btowns@sbcglobal.net
- Vice President – Raymond Wenig
E-Mail: rpwenig@gmail.com

Entegra Coach Owners Association (ECOA) Newsletter "Rollin' Along"

Volume 2 Issue 4, April 2019
Produced by: Dana Sawyer
dana.sawyer350@gmail.com

Presidents Corner

Dear Entegra Family,

In 2013, Medarda and I were on our way to the first-ever Entegra event in Petoskey, MI. We decided to stop at the factory in Middlebury and see if there was a Club. If not, we thought we might start one if we could get permission. Needless to say, they agreed. So, we continued on up to Petoskey and pitched the idea. 30 Coaches signed up.

On August 31st, 2013, the Entegra Coach Owners Association was born. Over the last six years we have seen the Club grow to over 1,600 coaches at one point. Medarda and I have seen some 46 events in those six years, and it will go past 50 before the end of 2019.

It has been an amazing journey, traveling all across America, and with our upcoming Oh Canada Rally, we can say we've touched all of North America. We've been blessed with seeing some great places, and learned a lot about our fabulous coaches. But the greatest blessing has been to make friends with all of you. Your happiness is effusive and is the foundation for our Entegra Family. It has truly been one of the greatest times, the best of times in our lives. Nothing gives us greater joy than to see your smiling faces at a Happy Hour in any corner of the continent.

But all things have a cost, and we still own a fantastic house on some cool, shiny wheels that are eager roll to places we have yet to discover. I promised Medarda that I'd take her to those places some years ago, but we haven't yet been to many of them, and I'm a man who will sacrifice much to keep my promises.

So, it is with regret and very fond memories that we announce the end of our tenure guiding this great Entegra Family. At the end of 2019, Medarda

and I will surrender our duties to other, more capable hands who with your help will grow the Club and bring more friends to this fantastic hobby.

We will always be around and we will always be your friends, so call any time. We'll help any way we can.

A Nominating Committee of five club

members has been formed under the leadership of two of our Vice Presidents Tom Crowley, and Ray Wenig. They will begin a search for our next group of officers. Needless to say, we are all better together. Volunteering with this group is very fulfilling. If you are of a mind to help lead this great association of ours, please share your willingness to serve with:

Tom Crowley - crowleytj@gmail.com

Ray Wenig - rpwenig@gmail.com

Medarda and I look forward to seeing you all at our club events throughout the remainder of 2019.

Until then, Travel Safe!

We'll see you down the road.

Sincerely,

Pat Bauer, Founder

Entegra Coach Owners Association



From the Editors Desk

In this issue we bring a new front page, some color coordination, and articles focused on Spring activities. The new front page highlights our common bond which is the Entegra Coach and Lifestyle shared through the Entegra Coach Owners Association. Although quite a bit more subtle, colors have been selected to match the common colors used by Entegra. Finally, in this issue we have special articles focused on the tasks of preparing the coach for travel. These articles are written and shared by members just like you.

When reading these articles keep in mind your lifestyle, how you use your coach, and then use what fits you best. Also please keep in mind that neither the ECOA nor individual members are endorsing a particular product, but sharing information that may be useful to others.

Our next issue will feature articles on maintenance and checks that should be made during a trip. Take the time to become a contributor and share your hints and stories.

Rally Ho' – Upcoming Events

- Cherry Hills Rally, **Cancelled due to lack of registered participants**
- Entegra Academy and Homecoming, May 14 - May 17, Elkhart, IN
- Spruce Goose Rally, Jun 01 - Jun 05, McMinnville, OR
- FMCA 100th International Convention and Expo, Aug 14 - Aug 17, Minot ND ***** **Also See ECOA Gathering at FMCA 100th Aug 13 - Aug 18**
- OH Canada Rally, Aug 18 - Aug 23, Winnipeg, Manitoba, Canada
- Summerfest '19 - Normandy Farms Rally, Sep 15 - Sep 20, Foxboro, MA
- Albuquerque Balloon Fiesta, Oct 09 - Oct 13, Albuquerque, NM
- Amana Colonies, Oct 17 - Oct 21, Amana, IA

Details available on ECOA, Entegra, or FMCA website

Technical Hints and Information

MUST HAVE APPs - Available from Your APP Store

	ENTEGRA COACH - Quick access to manuals, service locations, events and more
	SPARTAN CONNECTED CARE - Access to maintenance schedules, diagnostic codes, key contacts and more
	IRV2 - RV FORUM - Supporting thoughtful exchange of knowledge, values, and experience among RV enthusiasts (select owners forum then Entegra)
	COACHNET - ALLSTAYS - TRUCKER PATH -

Tips for Preventing RV Tire Failure By Wayne Baumann, Alt. National Dir

It is hard to say what the most important part of an RV is, but if I were naming important parts, we absolutely cannot leave out the tires. As with most things in life, the best way to deal with RV tire failure is to do everything you can to prevent it from happening in the first place. You know the old saying an ounce of prevention is worth a pound of cure. Here are some things you can do to prevent RV tire failure:

- **PROPER INFLATION IS CRITICAL.** One of the biggest causes of RV tire failure is under-inflated tires. Before you head out on any long leg of a trip, use a pressure gauge to check the pressure of each tire. The manufacturers recommended the tires are cold for the most accurate reading.

If necessary, hit up a local gas station or tire shop with an air pump before hitting the road, taking great care not to over-inflate your tires.

- **REGULARLY INSPECT RV TIRES FOR WEAR AND DAMAGE.** Check your treads to ensure that you are getting enough traction but also look at the entire tire for cracks or anything else that might compromise its integrity. Also, all your tires should be wearing evenly; or it could signal an even bigger problem.
- **DONT OVERLOAD YOUR RV.** While it can be helpful to take lots of things with you on your trip, having an RV that is too heavy can put all sorts of strain and stress on the tires. The best way to know that your RV is not over the limit and that the weight is distributed evenly is to weigh it on a CAT scale, being sure to check the load on each individual wheel.
- **USE TIRE COVERS WHEN STORING YOUR RV.** Covers that black out the sun's UV rays are best. This is especially important if you keep your RV outdoors, even for short periods of time. Sunlight, weather, and ozone can cause tires to deteriorate faster than they should.
- **ROTATE THE RV TIRES REGULARLY.** As for how often you should do this, consult your RV manual or check with an experienced and reliable RV mechanic.
- **REPLACE OLD OR DAMAGED RV TIRES.** Like everything, RV tires do not last forever. You want to replace old or damaged ones before they fail on you at an inopportune time. About every six years is about right for new tires, though if you put a lot of miles on your RV, or if your tires show signs of premature aging, you may need to replace them more often.

Keep those wheels turning. When maintained and cared for properly, you could get a solid six years out of your tires before you need to replace them. Take care of your RV tires and they will keep you rolling.

Spring Forward

By Ray Wenig, ECOA Vice President

The calendar says SPRING is HERE and the weather is wild and scary. The ground is waking and the farmers are busy and nature will get it together. SPRING is renewal, and time for cleaning, adjusting, planning, and checking our gear to make sure it is ready for the heavier use we make of our RV's in the warmer periods of our Northern Hemisphere.

Our one addition to our spring cleaning list was an easily forgotten one, both at home and in our big rig RV's and that is the dryer vent outlet which is hidden in the engine compartment. We all clean the pull-out filter in the dryer itself but some chaff and lint escapes into the flexible metal vent pipe and loves to assemble itself in larger and larger rough spots or turns in the pipe and especially at the bottom end of the pipe and the connection to the end cover and its louvers. The clean out is best done with taking the end piece off the pipe (2 or 3 screws) and then vacuuming out the accumulated lint in the pipe. Left un-serviced the lint will reduce the dryer performance and could lead to a fire hazard.

The chores part of Spring is some amount of work and time, but SPRING also brings the fresh smells and the buzzing sounds of nature and other changes and renewals. The RV industry is also experiencing changes and shifts that will impact the users and customers in many ways:

- The hectic and excessive RV sales growth rate is slowing and the pendulum may reach a better balance than the traditional boom and then bust cycle.
- The business side is transitioning to coincide with the users by moving trade shows and new models to spring when the buyers wake up rather than fall. The recent RVX show in Salt Lake City is a major shift for RVIA and was considered a start-up success.

- There is more focus on showing future “CONCEPT” products to excite customers and build a better sense of what is possible and listen to the buyers express interest and support.
- There is more copying of ideas from other “mobility sectors” – RV maintenance is more complex than automobiles and more demanding. Some vendors are now offering 2 to 4-year inclusive maintenance (at approved service centers) in the sales price. Win – win as long as the pricing is reasonable and the delivery easy to access.
- The long term move to emotive power is creeping forward. E-busses are dominating in new fleets, e-delivery vehicles are growing, e-controls are necessary for autonomous vehicles, a TESLA RV is rumored, e-steering and e-road sense and stability control are here.
- The enormous collected knowledge and opinion and suggestions in the RV world is coming under aggregation and common ownership. This is leading to integration, cross linking and hopefully verification, validation and updating. Single secure access over all platforms with extended (and sharable additive commentaries) will be welcome.
- Re-branding and integrated customer services will enhance user learning and confidence building and longer and deeper commitments to the RV lifestyle. Industry associations, dealers, campground owners’ groups, franchising companies, work camping networks, and others are interconnecting and sharing thinking. Ideas and some early initiatives.
- Outdoor recreation is also becoming of interest to educational institutions, new startup companies, economic developers, community builders, and other service developers.
- Integrated communications systems are coming and the RV world is easier to implement and integrate and change. The Internet of Things (IOT) and true 5G structures will open all kinds of new opportunities and applications making the RV an advanced experimental system.

Spring is here so take care of what you have, use it wisely and smell some of the new bloom roses. Remember to help the bees, be GREEN as practical, and support your families and communities.

A Coach Start Procedure By Dana Sawyer

When you attend the Spartan Academy training for RV Owners, you will learn the Spartan recommended startup procedure for motorhomes. When you read your Entegra Coach User Guide, you will find a procedure for starting the engine under PREPARING TO DRIVE. Although the two procedures are not identical because they focus on different aspects of the startup, you should follow the combination of both.

The steps listed here assume the case that you have been living on a site (slides out, leveling jacks down, shore power and services connected) for several weeks or months. Start procedures under other conditions may vary.

- Check tire pressure when the tires are cold and check wheel oil bath hubs for lubricant leaks
- Walk around entire vehicle checking for leaks
- Open engine compartment, check fluid levels (oil, coolant, hydraulic fluid), check for leaks, check for loose, missing, or damaged belts
- From the driver’s position
 - Apply and hold pressure to the brake pedal while turning the ignition key to the ON position (**do not start**) and while listening for 2 puffs of air per axel. Simultaneously, observe the dash until the “WAIT TO START” symbol goes out
 - Start the coach by turning the key fully clockwise, while observing the air gages until one gage has a slight drop in pressure. Use the high idle feature (press on/off cruise control

button then set button within 3 seconds) to air up the system more quickly

- Make sure the PARK BRAKE (yellow button) is set, retract all jacks
- Once the jacks are fully retracted release the park brake (**assumes you are on level ground and will not roll**) and perform 2 or 3 full, service brake (brake pedal) applications (not necessary for disc brakes)
- Apply the park brake, set for high idle, check that the coach is at ride height, and continue the process of preparing to drive

Disconnecting utilities (water, electric, sewer, cable), stowing external items, and stowing internal items may all be accomplished prior to or during the start procedure. Slides should not be retracted until the coach is at ride height.

PulseTech's PowerPulse **By Zena Johnson, Marketing Mgr.** **PulseTech**

PulseTech's PowerPulse Battery Maintenance Systems are ideal for use on your RV house and starting batteries. Charging alone does not eliminate the main cause of battery failure – energy robbing lead sulfate deposits on the battery plates. The PowerPulse attaches to the battery and generates an intermittent, high frequency pulse waveform, PulseTech's patented Pulse Technology, that reduces existing sulfate deposits on your battery plates and keeps them from building up again. Keeping batteries clean from sulfates is important as it allows batteries to continue to operate at full capacity and prevents the slow battery suffocation that naturally occurs as sulfates build up. This allows your batteries to charge deeper, maintain greater reserve capacity and last three times longer.

The PowerPulse will keep your batteries in peak performing condition so they last longer with full

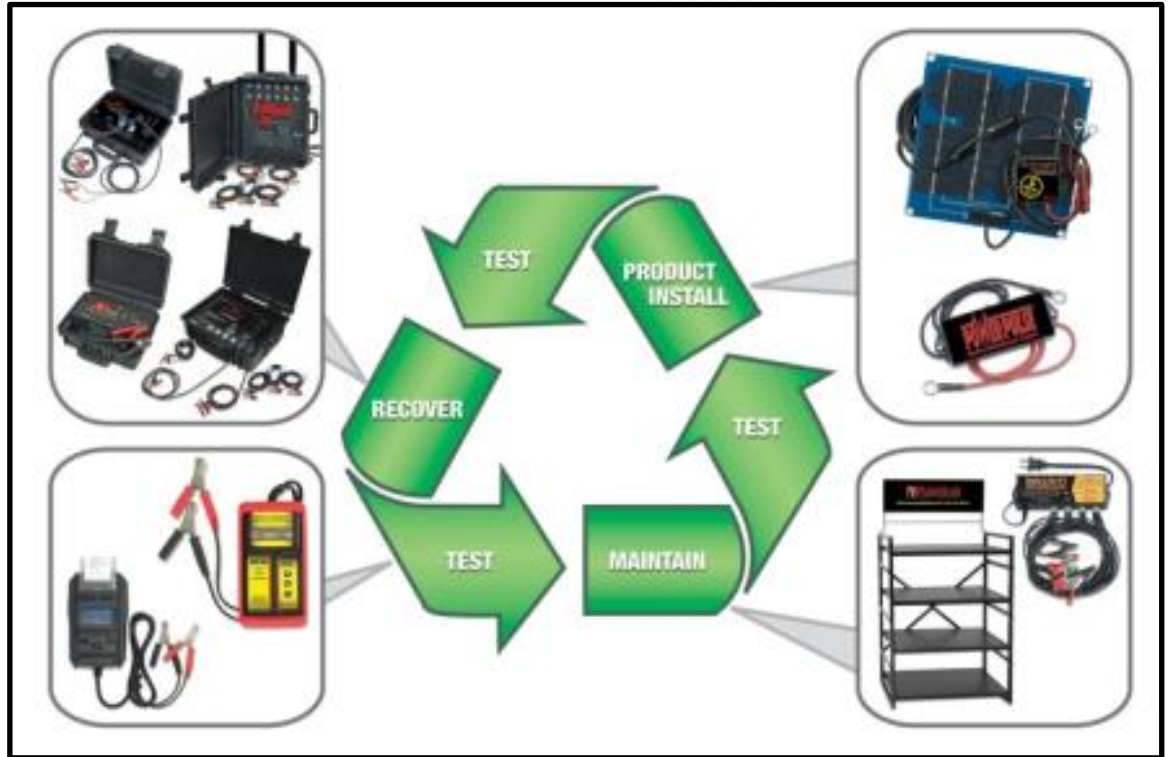


reserve capacity. It will help keep them balanced so they work together so your house RV batteries will perform like new over an extended period of time. The PowerPulse can be used on all lead-acid batteries including VRLA, AGM, gel and flooded cell batteries and is available in 12, 24, 36 and 48-volt models. It is completely safe with no danger of overheating the battery. Go to www.pulsetech.net for more information.

Battery Management Program **By Rick Gregory, PulseTech**

Back in 1994, we were asked by the engineers at Fort Hood, Texas to design a program to help the US military reduce their battery costs. The soldiers were not battery experts but they saw a need to keep their batteries in the field and combat ready so we introduced a battery management program that taught them how to manage their batteries from cradle to grave. In 2 years, we reduced the battery expenses at Fort Hood by \$7 million.

This program is now available in the commercial market and if you or your customers have not started using this program, you are losing money. This simple 3-step program teaches how to restore batteries instead of replacing them, how to maintain them and keep them charged and ready to perform at all times.



Some of the benefits of using this program include:

- ✓ Extends battery life up to 3 times
- ✓ Recovers 70% of spent batteries
- ✓ Extends alternator and starter life
- ✓ Reduces the number of batteries purchased
- Reduces hazardous waste generation

How much money can the BMP save you? If you only dispose of 10 batteries per month:

- ✓ 10 spent batteries x 0.7 = 7 batteries recovered each month
- ✓ 7 batteries at a cost of \$150 per battery = \$1,050 batteries saved in new battery purchases per month
- ✓ Annual savings = \$1,050 x 12 = \$12,600 per year!

We at PulseTech are very proud to work with you and all of our government and commercial customers. It is our pleasure to provide quality products and programs that will reduce expenses and benefit our environment.

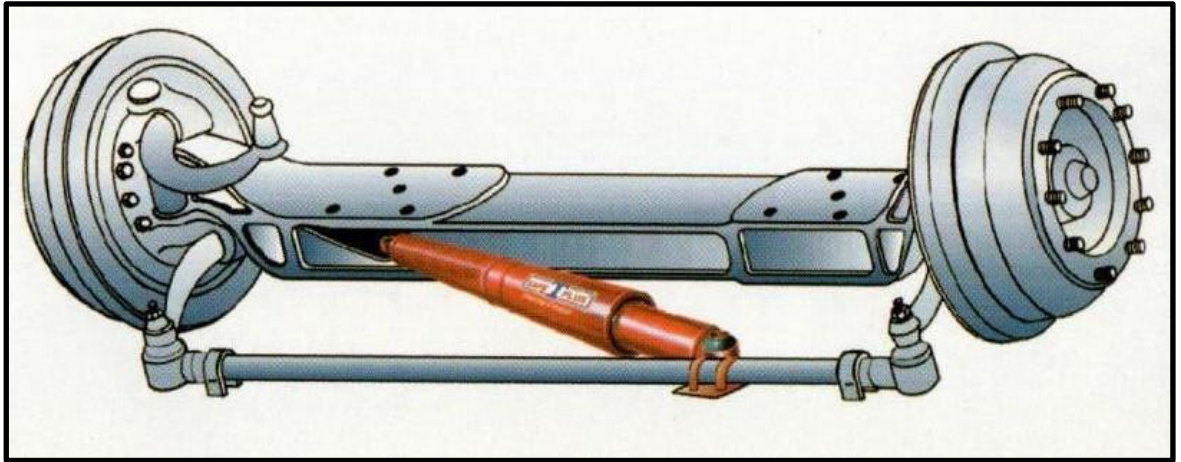
Safe-T-Plus Steering Control By Kathy Doran, Safe-T-Plus

Safe T Plus Steering Control will keep you on the road, tracking straight during a front tire blow out; that is the safety part of our name. The Plus part; it will help protect against the effects of oversteering, side winds, passing semi push/pull, thereby reducing drive fatigue. The cylinder is spring and hydraulic loaded and when installed (a simple bolt on application) to the axle of your coach, will provide better handling and manageability of the coach by reducing these common issue effects (by about 70%). The spring is already coiled (preloaded with foot pounds of pressure) so it is always working to hold the coach at the center point of the lane as these issues arise providing you constant protection. Not only safety but peace of mind comes with a Safe T Plus!

A recent testimonial from the 2019 FMCA Perry, GA show (however not from an Entegra owner):

I have owned my RV for over 2 years and have been looking for something to improve the RV steering. I

have researched a number of products. My wife and I attended the FMCA Convention in Perry, Georgia this past week. I attended the drive safely seminar and was interested in your product. I decided to purchase the unit



and was very surprised I could have it installed while I was there. I noticed a difference in the steering right away. I had high expectations, but was not expecting the results I experienced on the 5 hour drive home. The installation went very smoothly and the crew was the best. I got on I-75 and noticed an improvement right away. My coach stayed in the lane and I was not battling the road wondering. I noticed I was not over steering and less swaying of the coach. Then a semi come up along side of me. I gripped the wheel waiting for the suction to pull me towards the semi. It did NOT happen. I said OK that is different but I must have did something. Semi after semi passed me and there was no deviation from the road as I have experienced before. I must have told my wife, this unit really works and works well. The biggest surprise was when I got home, I was not exhausted from the 5 hour drive. This should be standard on all motor coaches. I absolutely am a believer of this product. Thank you very much - Edward Mimikos - Ocala, FL

For more information contact:

BRYAN MAGGI

SAFE-T-PLUS Steering Control

1230 Six Flags Road, Building C, Austell, GA 30168

TEL (800) 872-7233

EMAIL bmaggi@safe-t-plus.com

FAX (770) 322-9737

WEB WWW.SAFE-T-PLUS.COM

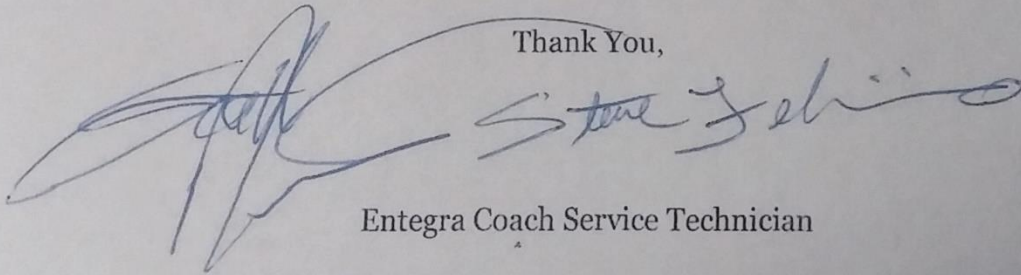


Other Checklists
Provided by Pat Bauer, ECOA President

Tips for Maintaining your Entegra Coach

- Inspect roof for condition of sealant, cracked roof vents, missing mushroom caps.
 - Inspect awnings and slide out toppers for debris.
 - Inspect caulking and sealants on the exterior.
- Inspect and clean filter for roof air conditioner ceiling return air vents.
- Inspect under motor home for water system or chassis fluid leaks.
- Inspect all exterior lights for function; headlights, clearance lights, and brake lights.
 - Inspect fire extinguishers to insure the indicator gauge is in the green zone.
 - Inspect sink p-traps for leakage.
- Inspect rubber seals on slide outs and cargo doors to insure they are in position and formed to function VS being flat or smashed.
 - Check torque on windshield wiper arms; specification is 60 FT LBS.
 - Clean and rinse sewage and gray holding tanks.
 - Sanitize fresh water system; pump and tank.
- Check water system filters; whole house, drink dispenser, and refrigerator.
- Check the removable filter on the water pump; clean and rinse out any debris.
 - Protect the floor where slide out rollers rest on floor for during transit.
 - Proper winterization under certain circumstances.
 - Clean and lubricate entrance step slides and rollers on Cornerstone units.
 - Check Aqua Hot boiler antifreeze (propylene glycol) level in the reservoir.
 - Inspect slide out motor mountings for loose bolts.
 - Check fluids in the generator; both antifreeze and oil levels.
- AGS (auto gen start): Before setting for use, start and let it run until warmed up if it has not been ran for an extended period.
 - Test egress windows for function.
- Check fluid in the hydraulic leveling system; it should be approximately one inch from the top of the tank.
 - Check batteries in remotes when function fails.
- Check batteries or fuses in smoke and LP/CO2 detectors routinely.

Thank You,



Entegra Coach Service Technician



AMP Draw

Lazydays RVSM
RV RESORT

It's surprising how fast the amps add up and that causes the breaker to trip. Knowing what can be run will prevent that inconvenient "MY POWER WENT OUT" telephone call. So take a look and just see how much you are drawing.

TYPICAL RV POWER CONSUMPTION ITEMS

(Note that the Watts and Amps below are typical. Some appliance may require more or less depending on their efficiency and size.)

120 Volt AC Amp Ratings

Appliance or Electronic Equipment	Estimated Amps
Air Conditioner (X number of A/C)	12-16 Amps
Blender	5-6 Amps
Coffee Maker	5-8 Amps
Compact Disc Player	1 Amp
Computer (Laptop)	2-3 Amps
Converter	1-8 Amps
Crock Pot	1-2 Amps
Curling Iron	<1 Amp
Drill	2-6 Amps
Electric Blanket	0.5-1.5 Amps
Electric Fan	1 Amp
Electric Water Heater	9-13 Amps
Electric Skillet	6-12 Amps
Hair Dryer	5-12 Amps
Iron	5-10 Amps
Light (60 watt % 120V)	<1 Amp
Microwave	8-13 Amps
Microwave (Convection Oven)	13 Amps
Refrigerator in AC mode	5-8 Amps
Space Heater	8-13 Amps
Television	1.5-4 Amps
Toaster	7-10 Amps
Vacuum (handheld)	2-6 Amps
Washer/Dryer	14-16 Amps

12 Volt DC Amp Ratings

Appliance or Accessory	Estimated Amps
Aisle Light	1 Amp
CO Detector	1 Amp
Fluorescent Light	1-2 Amps
Furnace	10-12 Amps
LP Gas Leak Detector	1 Amp
Overhead lights (Per Bulb)	1 Amp
Porch Light	1 Amp
Power Roof Vent	1.5 Amps
Radio/Stereo	4 Amps
Range Hood (Fan & Light)	2-3 Amps
Refrigerator (LP Gas Mode)	1.5- 2 Amps
Security System	1 Amp
Television (12 volt)	4-5 Amps
TV Antenna Booster	<1 Amp
TV Antenna Booster 12 Volt outlet	Up to 8 Amps
Variable Speed Ceiling / Vent Fan	4 Amps
VCR Recorder / Player	2 Amps
Water Pump	4 Amp



Hopefully this clears up any confusion on the difference between using amps supplied by the campground electrical source (AC amps), and using amps supplied by the converter (DC Amps).

Happy Camping!



ENTEGRA
COACH®

QUICK START GUIDE

Camp Setup / Tear Down

When setting up camp, please follow these steps:

1. Before plugging into shore power, turn off the breaker at the campsite post.
2. Extend the slide out rooms (always check for proper clearance first).
3. Make sure tires are straight. Extend jacks after slide out rooms are extended (Auto Level).

When packing up and leaving camp, please follow these steps:

1. Start engine to build air pressure. (Use high idle — cruise on and hold resume.)
2. Retract jacks to inflate air bags. Check for tire clearance.
3. Retract slide outs after unit has reached standard ride height.
4. Lock all appliance doors.
5. Turn off breaker at campsite post before unplugging unit.

While traveling, please keep these in mind:

1. Make sure the main power switch is turned on.
2. If traveling with food, turn the inverter on to use the refrigerator. Remember to turn the inverter off before storing unit or when not in use.
3. You should only have to use the generator if you want to use roof A/C units.
4. The engine alternator will maintain the house batteries during travel.

Entegra Coach Emergency Contact Information

Monday - Friday: (800) 517-9137 (8 AM - 5 PM)

After Hours Emergency: (574) 361-0034 (5-10pm EST M-F and 8am-10pm weekends and holidays)

Coach-Net Roadside Assistance: (800) 759-6999

Spartan After Hours Emergency: (800) 543-4277

0237948



ENTEGRA
COACH®

QUICK START GUIDE

Comfort Control Settings

Zone Classification

• Zone 1

- "Fan" operates front roof A/C, fan only
- "Cool" operates front roof A/C
- "Heat, Electric" operates front roof A/C, Heat Pump
- "Heat, Gas" operates front heat exchangers powered by the Aqua Hot, Burner or Electric Element must be turned on

• Zone 2

- "Fan" operates middle A/C, fan only
- "Cool" operates middle A/C
- "Heat, Electric" operates middle A/C, Heat Pump
- "Heat, Gas" operates In-Floor heat powered by the Aqua Hot, Burner or Electric Element must be turned on

• Zone 3

- Rear A/C on "cool"
- Rear heat pump on heat "electric"
- Heat exchangers — at rear wall, and under lavatory sink on heat "gas"

Basement — one heat exchanger on rear basement wall, thermostat located on top

- Passenger side of rear basement wall

Entertainment Center Set-up

Entegra satellite wiring is set up for two options:

1. Install receiver at main TV utilizing the HDMI output on wall plate. This signal will then be distributed to all four TVs on HDMI 2. You may also place a second receiver in the bedroom connected directly to that TV.
2. Install receiver at main TV and utilize coax output to the selector box. This will also provide satellite to all TVs through the selector box.

All TVs will have off-air antenna and park-cable capabilities.

Overall Dimensions

Height: 12'11" Width: 101"

Battling Hard Water

By Dana Sawyer

Hard water causes all sorts of problems in an RV like buildup in pipes, reduced temperature of hot water, hard to clean shower walls and doors, plugged faucet filters, mess in the dishwasher, and more. The popular solution is a salt-based system but it does have three drawbacks:

- Space is required for the system tanks, extra hose or plumbing, and salt
- Refrigerator manufacturers recommend avoiding the connection of softened water to ice makers because the chemicals can damage ice maker parts and result in poor ice quality (see your refrigerator manual)
- Dumping salt water into either septic systems or advanced treatment systems causes deterioration of those systems.

Gaining popularity are environmentally friendly electronic water conditioners that advertise they will eliminate all three of the above problems. Yes, the skeptics can find plenty of dissenting views that suggest the whole thing is a hoax or scam but I decided to select, install and test one in our Coach anyway.

My criteria for selection of the specific unit was:

- Small unit size (less than 6 x 6 x 2 inches)
- Simple install (no plumbing or electrical)
- Works on plastic (PEX) pipe
- Sized for RV water use

After researching many different units, I selected the Scalewatcher® Nano. According to Scalewatcher®, "the technology treats water in pipes with magnetic and electric fields. This results in many smaller crystals with a roundish shape, which will not easily adhere to pipe walls or other surfaces and will therefore flow with the water into the drain or will be wiped away easily when dried". The unit is approximately 5 x 3 x 2 inches, the install was simple (just wrap a pipe with wire,

mount an electronic box, connect the wires, and plug in the unit), it works on plastic pipe, and is sized for a small house.



The install guidelines included:

- Install inside
- Works best on plastic pipe
- Find 4 inches of straight pipe
- Install upstream of water filters
- Coil no closer than 6 inches from major steel/iron objects
- Wrap coil per instructions only
- Electrical outlet near install site

For our 2018 Aspire 42DEQ I installed the loop on the length of pipe feeding the whole house filter and mounted the electronic box on the front wall of the wet bay. This location keeps wiring out of the way and there is an AC outlet on the opposite

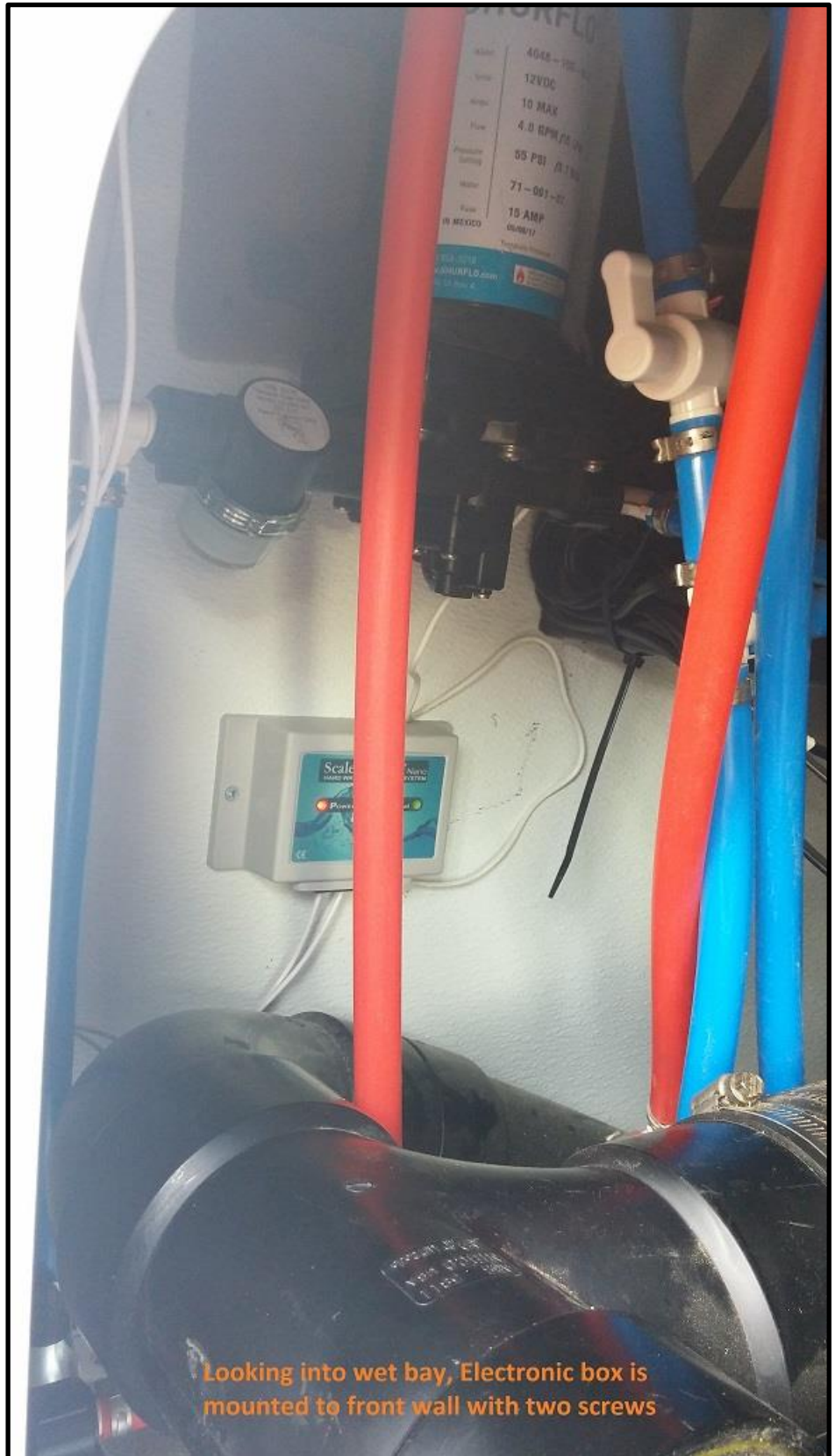
side of the front wall that is shared by the vacuum system.

The install was done in early January 2019. The coil was installed first and the wires routed along the edges out of harm's way. Wires were then cut to length for the position of the electronic box.

Next to the electronics box. Because the provided screws were too long for the front wall, I searched my SPARE PARTS container for shorter screws that would not go all the way through the wall. Once the box was mounted on the wall, getting the wires into the push clamps did require the use of a mirror and a few choice words but eventually they were securely in place.

On the other side of the wall is the outlet for the whole house vacuum. I plugged the unit's 12V DC adapter into the open outlet and because there is already a hole in the wall for water pipes, I simply pushed the power connector through and then pulled it down to the box. Whenever AC is energized (generator or post) the Scalewatcher® is operational. When we start traveling in early May, I will be checking the security of the adapter to see if it falls out of the wall socket while on the road (although this seems unlikely).

After 30 days of use there seemed to be some improvement in preventing scale buildup on shower surfaces and in the dish washer, reducing soap scum, and improving the lather of soap.



Looking into wet bay, Electronic box is mounted to front wall with two screws

After 60 days it was clear that the shower was much easier to clean and there was a lot less buildup in the shower door track, and that dishes including plastic ware wiped clean of spots much easier.

The Scalewatcher® is not a water softener and my results are for the hard water of the public water system in Mesa, Arizona. If you really want a salt-based water softening system there are two different types of systems available. Most popular and least expensive is the external softener connected in line with your water inlet hose.

Motor Coach Water Filtration (www.motorcoachwaterfiltration.com) provides a salt-based system that can be installed in your coach. I know Entegra owners that have this system and are very satisfied.

Have You Tried This By Dana Sawyer

In our 2018 Aspire 42DEQ I press the SEALEVEL II Tank Monitor Battery, Fresh, Grey, or Black button once to check the battery or tank levels.

Now for the twist.

The display amount changes continuously and automatically as the selected tank fills or empties if I push the Fresh, Grey, or Black button twice quickly. The display also adds a period to the end of the level amount and the display does not go out.

Although this is just a curiosity to most, it could be helpful when partially filling the fresh water tank or filling the blackwater tank for a flush from the wet bay.

Member Stories

Do you have a story to share?

Did you post an interesting bit on Facebook? Did you make a discovery or have an adventure? Do you volunteer for an organization? Good or bad, happy, or sad, exhilarating, or frustrating, your story may help or inspire others. Submit your information and photos to the Editor at:

dana.sawyer350@gmail.com

ECOA Yard Signs By David Phillips

About five years ago my wife and I owned a Travel Supreme Motorhome and belonged to a small, compared to ECOA, RV traveling club called the Traveling Supremes. As most Entegra Coach owners know, Travel Supreme Motorhomes was the precursor to Entegra Coach. Many of the current Entegra employees came from Travel Supreme and if you engage them in memories of Travel Supreme you may be in for a long, nostalgic conversation.

One of our Traveling Supremes members had unsuccessfully tried for several years to design and procure a yard flag with our club logo. The flags were to be displayed in front of each member's RV when we were at a rally to identify us as club members. Several years later I was elected an officer of the club and it became my responsibility to complete this project.

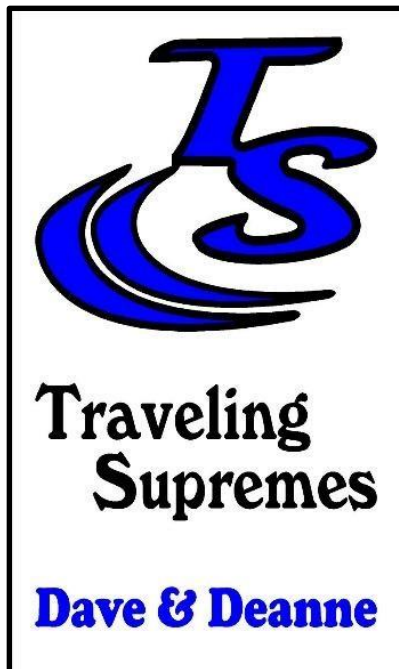
My wife and I shopped around, talked to vendors, and researched the internet for any ideas to design the flag. Everything seemed to be too expensive and would probably not hold up in the weather. We almost gave up on the project.

By happenstance, I was driving by a small sign store (in Buda, Texas of all places) and decided to stop in to see if they had any ideas on a yard flag for our club. They said they could not do a flag but suggested a metallic yard sign. The two-sided signs

would be made from 3mil MaxMetal, which is a composite material with thin aluminum sheets sandwiched. It would be printed with 3M vinyl and laminated for UV protection. Each sign could be personalized. We developed a draft design which I shared with other board members.

Many of the Traveling Supremes now have the yard sign.

As a long-time member, we have attended several ECOA events and noticed that there were no club yard signs (although there have recently been some large flags). At the recent Tampa Supershow I showed Pat Bauer a friend's Traveling Supremes yard sign and said I would like to do something like it for ECOA. Pat liked the idea and sent me the artwork for the logo.



After reworking the design several times with the sign company and coordinating with Pat we developed the ECOA yard sign.

The two-sided yard signs are 12 X 18 inches and have gromets at the top for hanging. They can be personalized with member names, names of pets (if any) and home town. **The cost is \$35 which includes shipping and handling.** They can be shipped anywhere in the U.S. Delivery will probably take 2-3 weeks.

To order, download the application from <https://entegraowners.com/resources/Documents/Yard%20Sign%20Application.pdf> or the form can be downloaded from the ECOA homepage. Fill it out and either mail it to the address on the form or



scan and send it as an e-mail attachment. Hangers for the signs can be found at local gardening stores or on Amazon under "lawn flag holders".

As a matter of information, we have no financial interests in the signs. We just thought it would be a nice addition to the ECOA events.

What Would You Do? By Tommy Townsend, ECOA Vice President

While at a recent rally in Savannah I was told this story. It caught my attention so I thought it was worth passing it on to others. It starts off by arriving at home after shopping. Realized they left something in their Newmar King Aire. Oh, we have Entegras you are saying, but the same entry door system is on both. He decided to go back to the car to get the item. They had locked the coach for the night so he tried to open the door. To his shocking surprise the deadbolt would not work. Honey we are locked in. Like the story started, they have a Newmar with a back door - we have an escape window. So, after looking over the front door latch, he decided the only way to fix it was to take it apart. All his tools are in the bottom of the coach

where they belong, right. By the way this is his first time to try that escape door. It was not very fast or easy to do, another story another time. He retrieves an assortment of tools and found that a #20 Torx fit the 3 screws on the cover plate. He removed the plate and reattached the dead bolt knob. It was a happy ending to pass on. So, we now have in our junk draw a # 20 Torx just in case it happens to us and would suggest the same to all RV owners. Be sure that your cover plate is the same screws as ours. And that is the rest of the story. As Paul Harvey always would say.

Recipes for the Coach Life

Share A Favorite Recipe

Do you have a favorite recipe that is made for the coach kitchen? We would love to have you share that recipe. Provide the list of ingredients, instructions, and photos. Submit your information and photos to the Editor at: dana.sawyer350@gmail.com

Pan Roasted Sea Bass

By Linda Hanson ECOA Vice President

HAPPY SPRING!

Oh yeah, I said it, yes, I did, S-P-R-I-N-G! I saw the first Robin so it is definitely official. Now some of you are laughing; calling me crazy and some of you are doing the floss dance with me. All I know is the snow is melting and that means it is time for us to open the big door and our beautiful Entegra will be rolling out for her first adventure of 2019! Lee says our destination must be warm and a place that has fresh fish, so, guess what the recipe is this month? It is one of his favorites. I hope you will enjoy this as much as he does!

PAN-ROASTED SEA BASS with CHIVE-GARLIC COMPOUND BUTTER

CHIVE-GARLIC COMPOUND BUTTER:

- 1 cup (2 sticks) Unsalted Butter, room temperature
- 2 Tbsp. finely minced fresh Chives
- 1 Garlic Clove, minced
- Pinch of Himalayan Salt

PAN-ROASTED SEA BASS:

- 4 (4-to 6-oz.) Sea Bass Fillets
- Himalayan Salt and freshly ground Black Pepper
- 2 Tbsp. Olive Oil
- Chopped fresh Chives for garnish

Beat the butter in a medium bowl with a food processor or electric mixer until light and fluffy. Add the Chives, garlic, and salt; beat until thoroughly combined. Spoon mixture in the shape



of a log onto wax or parchment paper. Fold the paper over itself; using your hands, shape the butter into a cylinder about 1-1/2" wide. Once it is shaped, twist the ends to seal it. Place the roll in the freezer for 20 minutes to set, then in refrigerator until ready to serve (can freeze for up to 1 month). When ready to serve, slice the roll into 1/4" thick rounds and remove the paper.

Preheat the oven to 375 degrees.

Generously season both sides of each fish fillet with salt and pepper to taste. Heat the oil in a large cast iron skillet (or a pan that can handle a high heat) over medium heat until hot. Sear the fillets, skin side up, until they are well browned and release easily from pan, about 4 minutes. Turn and cook 1 minute until seared. Transfer the pan to the oven and bake just until fish flakes with fork, about 5 minutes. Serve each fillet topped with a slice of Chive-Garlic Compound Butter (only 4 slices of the butter are needed for this recipe). Garnish with chopped fresh chives.

Regional Activities

Southeast Region

By Tom Crowley, ECOA Vice President

Wow, it is April already where did the winter go? Lynn and I had an active end of the year. Putting on a Christmas rally in New Orleans, the highlight being a trip to watch the lighting of the bonfires to light the way for Papa Noel whose pirogue is pulled by eight alligators down the mighty Mississippi. New Years, we did a second rally in San Antonio, TX.

Then we attended the Tampa Super Show and had an opportunity to look at the many new coaches available from all manufacturers. We returned to our home in Atlanta, GA for a well-deserved rest and to work on my amateur radio hobby of restoring ham radios and transmitters from the 50's and 60's. It is great fun to troubleshoot and repair these vintage radios

This Fall we will be voting for a new board including a President and secretary. Pat and Medarda have done a phenomenal job getting the ECOA off the ground and building it into one of the largest FMCA clubs in the North America. If you are interested in helping move ECOA forward, please contact one of the nominating committee members. They can describe the positions available. Please read the article from the nominating committee elsewhere in this issue.

Lynn and I are planning on returning to South Dakota for the Summer and visiting more of the sites in the Black Hills and surrounding area. Way back in 1963 I worked on the Minuteman ICBM's in South Dakota and have always wanted to go back and spend some leisure time in the that part of the country.

Safe Travels to everyone.

Destinations

Tell Us About Your Favorite Destination

Share your favorite destination or travel stop with other members. Send a short blurb with the locations name, address, ease of access, size of sites, and photos if possible., especially of you and your coach at the location. Submit your information and photos to the Editor at:

dana.sawyer350@gmail.com

What's New in Coaches

For those unable to attend the Florida RV Supershow, the 2020 lineup of Entegra Luxury Diesel Coaches now includes:

- REATTA
- REATTA XL
- ASPIRE
- ANTHEM and
- CORNERSTONE

Check them out at www.entegracoach.com by selecting the MODELS tab.

Entegra also announced that all ANTHEM and CORNERSTONE 2020 models will be equipped with E-Z STEER, a market leading automotive electric steering technology to optimize steering performance for your motorhome.

In other news, The Entegra Coach® Cornerstone® 45F, luxury diesel motorcoach was selected by

Travel + Leisure magazine as their choice for Luxury Living. This award comes after the 45F was selected as one of the Judges Choices in the "Luxury Living" category on Tuesday at the RVX Reveal. RVX is an RV Industry Association (RVIA) tradeshow event showcasing the newest and best-selling consumer products.

Recent TSB Notification for 2017 – 2019 Anthem and Cornerstone.



Highland
RIDGE RV

STARCRAFT

Technical Service Bulletin Notification TSB #19-018
Unit VIN:4VZAU1D92HC081955

**WILLIAM BAUER
1609 DOWER WAY
SUN CITY CENTER**

FL 33573

Dear Valued Customer:

Jayco has determined that certain Model Year 2017 - 2019 Anthem and Cornerstone Class A motorhomes require a service appointment to prevent water intrusion at the four (4) rear Blind Spot Monitors. Once water is present inside a monitor, failure is imminent.

Our records indicate that your motorhome is affected by this Service Bulletin. Please contact your nearest Entegra dealer to schedule an appointment and present this letter as authorization to have the procedure completed at no cost to you.

If you have sold or traded your vehicle, or for any reason cannot have this service performed, please contact the Entegra Customer Service Department at 800-517-9137.

We apologize for any inconvenience or concern this bulletin may cause and want to assure you that Jayco is taking all the necessary steps to ensure our product quality meets your expectations.

Sincerely,
Entegra Coach

Entegra Service Highlights

Great Service Stories or Tips

Share your service experience with other members. Send a short story with names, places, and a description of the task. Submit your information and photos to the Editor at:

dana.sawyer350@gmail.com

Secretary

First Quarter Roundup By Medarda Bauer ECOA Secretary

We have been busy!

ECOA's first quarter was extremely busy. Beginning in mid-January, 107 gorgeous coaches snaked their way through the Tampa RV Supershow, parking



together for five days of fun. Besides viewing all the RV coach displays and visiting two buildings of "everything for an RV", attendees enjoyed a great barbecue hosted by Lazy Days and ECOA. Entegra techs were available, providing up to three repairs to coaches giving members a chance to meet these hardworking members of the "Entegra Family". Additionally, Pat Carroll, from Entegra's design department, hosted an owners meeting. Here

owners were encouraged to share their thoughts and ideas about their Entegra coach.

As one rally ended another Entegra Rally began at Quartzsite. Hosted by ECOA Vice President Gary



Jones and his wife Dee, 60 coaches gathered in the desert for a round of dry camping. Bonfires and potlucks highlighted this event. As usual attendees were able to view the many vendors present at this rally.

Our third club rally took place in February at the Sarasota County Fairgrounds. Great food was the



norm but the highlight was a charter bus trip to the Ringling museum. This museum is several in one incorporating fine art, beautiful gardens, and a historic home tour. A luncheon, hosted by Entegra, followed on the waterfront at the Marina Jack restaurant. Participants were treated to a

Rollin' Along

Official Publication of the Entegra Coach Owners Association

panoramic view of yachts and water as they ate their gourmet lunch. Ted Cook, from Entegra was able to join the group answering many questions from the group. Pat Carroll also showed up and entertained participants with his special brand of humor while taking suggestions for improving our coaches.

Beginning in March, coaches headed to the Stone Mountain Campground in Georgia for an FMCA



pre-rally. The weather was cool but the roaring fire in the pavilion was warm with everyone enjoying this three-day experience. Friendships were renewed and new ones made. Ted Cook again joined us sharing information and answering questions. A highlight was the dinner hosted by NIRVC at the onsite Marriott hotel.

Our final rally stop was the FMCA gathering in Perry Georgia. Forty-two Entegra's of every color and model parked together, enabling participants to meet other owners sharing the fun of the "Entegra Family". A highlight was getting a firsthand look at the new 2020 Entegra Cornerstone located at the NIRVC display. It appears shopping was the norm as most attendees came back to the parking area holding bags and

boxes of their most recent purchases. Once again Entegra sent techs to complete up to three repair items. ECOA hosted a chapter fair and had the



opportunity to encourage "wanna bees" to visit. In fact, new owners stopped by to visit and learn more about our club.

If attending an event sounds like fun and you would like to join us, please check our events page on the website. Upcoming events include: May Homecoming in Elkhart, FMCA Minot North Dakota in August, Winnipeg Canada in August, Foxboro (Summerfest) Massachusetts in September, Amana Colonies in Iowa in September, and finally the October Albuquerque Balloon Festival.

Come join the "Entegra Family", learn something new, and have a wonderful time.

Medarda Bauer, ECOA Secretary

IN MEMORIAM

For those who might be unaware, Joyce Skinner's mother passed away in early March. The club sent a spray of flowers and received a very warm thank you from Joyce and her family.

Treasurer

Treasurers Official Report -ANNUAL AUDIT: An annual audit of the chapter's financial books and records shall be undertaken and reported to the membership.

Membership

Maintaining your membership in the Entegra Coach Owners association is simple and secure. Follow these steps:

- Go to www.entegraowners.com
- Select HOME
- Scroll down and select "RENEW MEMBERSHIP HERE"
- Log in using your email address and password
- Follow the instructions

When entering credit card information, the site will automatically switch to a secure (HTTPS) link.

Notes from the 2019 ECOA Nominating Committee

It is time to start practicing for elections, in this case the ECOA 2020-2022 Board of Directors. The ECOA conducts its elections of officers currently on a two-year cycle where all officers are elected for two-year terms. As ECOA has grown the current board has recognized the need for continuity of operations and has adopted a plan to transition the terms of officers and board members to staggered two-year terms. Most other associations and clubs adopt this structure as they mature. This may be a bit confusing as the terms need to either extend or shrink by a transition year and then the staggering works going forward. In addition, the support of more members means more levels of serving and a need for more people to help sustain the organization. This year's nominating committee and the current ECOA Board of directors are working together to adjust the terms and maintain

continuity of operations and add more focused officer positions to help with growth and service delivery. The new positions will include VP of Membership and an immediate past-President Position to help with knowledge transfer.

In addition to the change of terms, the founders of ECOA are retiring from their super active and excellent work of creating and building the ECOA into a successful start-up. Thus, we need to replace this team with another qualified team or two separate critical positions. All this is happening in times when interest and engagement with RVing are changing at all levels including the participation and support of Clubs and membership communities.

The nominating committee (recruited and approved unanimously by the current board) are the following members (the short background statement on their Entegra background is from each member):

Ron Clukey - clukeyr@aol.com - Ron has had a 2010 Cornerstone for 7 years, is a Chiropractor in the Lakeland FL area and the Executive Director of a regional Hot Air Balloon Festival.

Manny Francis - mannyfrancis@live.com - My Wife Jeanie and I have been RVing since 2004. Our stick and brick home is in the SF Bay Area. We got our 2018 Entegra Aspire in December 2017 and this Coach has changed our life style. We are now Glampers!

Lynn Hochradel - lynnhochradel735@gmail.com - Lynn and her husband Dan, joined the Entegra family 2015. They are retired and have a stick & brick home that was built around 1840 in New Orleans, LA. They also own a lot at Bella Terra RV Resort in Foley, AL and split their time three ways; New Orleans, Bella Terra and traveling! It is a wonderful world.

Richard Koehl - rrk8091@charter.net - Rich has been camping with his wife Kelly since 2003 and purchased an Entegra Aspire in 2018. Rich is a Vice

President of a Food Service Equipment Manufacturer, and his wife Kelly is a School Teacher. Rich is also a retired Air Force Lt. Col and looking forward to full retirement in a few years.

Rich and Kelly travel in their Aspire 3-6 months a year. Their home is in Wisconsin. They have four children and 6.5 children spread across the country.

Joe Seminara - joeseminara@comcast.net -

Joe and his wife are enjoying their 2018 Anthem, their second Entegra. They also enjoy their stick and brick home on Cape Cod each summer and traveling 6 months a year including spending time at their site in Silver Springs Florida.

In addition, two current ECOA Board members (Tom Crowley and Ray Wenig) are serving as advisors and sounding boards to the nominating committee to help the process in any appropriate way.

Tom Crowley - crowleytj@gmail.com - Tom has been motorhoming since 1970 and purchased an Entegra Anthem in 2014. Tom has been a VP of ECOA since 2016. He was Web Master and started the ECOA newsletter.

He and his wife travel in their Entegra 5-6 months a year. They also have a home in Atlanta and a second home in Chiefland Florida in a community dedicated to astronomy.

Ray Wenig - rpwenig@gmail.com - Ray and Sandy upgraded to Motorhoming in the 1970's and moved to Travel Supremes' in 2002 (where they lead the TSOA and its rallies and tours) and then to Entegra (a 2015 Anthem). Home has been MA and SC and now full timing, sometimes with various work camping gigs. We like clubs of all types, meeting people, building communities, continuous learning, adapting to new places and technologies, uncovering BEST examples of anything (art, music, rally's, food's, fun times, and creative ideas).

Cooperation, communication, and connectivity are key passions.

The nominating committee needs willing and interested volunteers to fill open positions. Please contact any of the members or the advisors with your interest in serving or the names of someone you believe would make a good club officer. The elections will be held at the Summerfest Rally in September 2019 at Normandy Farms in Massachusetts. Nominations from the floor will be open at that time. The nominating committee report and recommendations will be delivered in the Summer Newsletter and via e-mail to all members in good standing.

Regards:

Richard Koehl
Chair of the ECOA Nominating Committee
Rrk8091@charter.net
920-889-7432

FMCA International Area

Happenings in the National Directors World

By Terry Walker, ECOA National Director

As National Director of the Entegra Coach Owners Association (ECOA) I am a member of the FMCA Governing Board.

According to the FMCA's Chapter Officer's Handbook, National Directors are obliged to represent at all times the best interests of the entire FMCA membership and are responsible for the policy making of the organization. They are to 1) keep ECOA informed of items pertaining to the National Organization, 2) keep the National Organization apprised of items happening on the

chapter level, and 3) participate in and vote during Governing Board meetings.

To accomplish this, the National Director receives periodic Governing Board mailings which include items such as updates from the National President, minutes of Executive Board and Board of Directors' meetings, Governing Board meeting notices, etc.

FMCA Bylaws state that –

“The Governing Board shall convene during the period of the Annual Membership Meeting, at specific FMCA International Conventions, in regular meetingsand in special meetings as deemed appropriate”.

The next regularly scheduled meeting of the Governing Board which will convene in Minot, ND during the 100th International Convention in August 2019.

I will provide copies of the items requiring Governing Board vote to each of the ECOA officers – we will review these at the next ECOA executive meeting to determine the best method to arrive at ECOA's consensus position for me to vote in Minot.

If you are interested in seeing personally what FMCA is doing you can sign onto your FMCA

account with your username and password (if you do not have these you will need to create a new sign in account) then click on the link to the Governance Website!

Links of Interest

LINKS OF INTEREST

- ECOA Web Page <http://www.entegraowners.com/>
- ECOA Apparel <https://ecoa.logosoftwear.com/>
- Entegra Coach <https://www.entegracoach.com/>
- Spartan Chassis
<http://www.spartanmotors.com/rv-range/>
- FMCA <https://www.fmca.com/>
- IRV2 <http://www.irv2.com/forums/f278/>

CONTACT INFORMATION

- Entegra (M-F, 8-5) 800-517-9137
- Entegra (after hours emergency) 574-361-0034
- Spartan (m-f, 8-5) 866-383-3695
- Spartan (after hours emergency) 800-543-4277